

# Serial FPDP Protocol Test Solutions



## All Functions. All Speeds

Absolute Analysis Investigator™ offers a complete range of Serial Front Panel Data Port (sFPDP) test solutions supporting the VITA 17.1 and new VITA 17.2 specifications. Standard link speeds up to 6.5Gbps and non standard link speeds up to 10Gbps are available.

## Network Support

All sFPDP network topologies are supported and sFPDP optional parameters can be enabled or disabled under user control. A full range of connections to the network are provided including both copper and optical solutions.

## Integrated Tools

Investigator™ sFPDP tools are completely integrated with all other Investigator™ solutions to form a flexible, unified, scalable and upgradeable architecture, facilitating multi-protocol testing across devices bridging sFPDP and other protocols.

## Serial FPDP Protocol Analyzer

The Absolute Analysis Investigator™ sFPDP Protocol Analyzer captures and displays 100% of link data, even at full line rates. Views of SWDV and STOP/GO flow control primitives, as well as frame delimiters, frame header, and payload data are provided. The Protocol Database Editor allows the user to define additional decoding of the sFPDP frame to enhance the existing functions. Deep, bit-level triggering and pre- and post-filtering capabilities ensure that relevant data can be extracted from multi-gigabit data streams.

## Get your free Serial Test Verification Kit.

### Includes:

- Best Practices for High-Speed Serial Test Guide
- How to Solve Complex Protocol Problems DVD
- Protocol Analysis Tips 'n Tricks Newsletter



## Primary Features:

- Easy-to-use drag & drop GUI
- Customizable & configurable database decodes above sFPDP
- Concurrent 100% true line rate traffic generation and capture
- Multiple lane support with cross-lane triggering
- Independent filters on each lane with bit-level control
- Traffic generation, protocol analysis, BERT, and statistics on each port
- VITA 17.1 and VITA 17.2 compliant
- Standard and non-standard speeds

for more information:

**NextGig Systems, Inc. 805-277-2400 NextGigSystems.com**



## Protocol Editor

Several users have implemented sFPDP as a point-to-point network to allow two devices to communicate together using a user-defined protocol. The Protocol Database Editor allows the Protocol Analyzer's standard database to be expanded to support user-defined protocols. Once part of the database, a user-defined protocol can be used as a filter or can trigger scenarios, in addition to being fully decoded in the trace viewer. Other features, such as post-capture filtering, are fully available as if the protocol was part of the standard Investigator™ Protocol Analyzer database.

## Traffic Generator

- Multi-level triggering
- Trigger on multiple consecutive events on, or across, all channels
- Select from a list of predefined trigger events
- State machine "loop sequence" triggering
- Re-arm trigger if condition is not met
- Independent channel triggers

## Impairment Tester

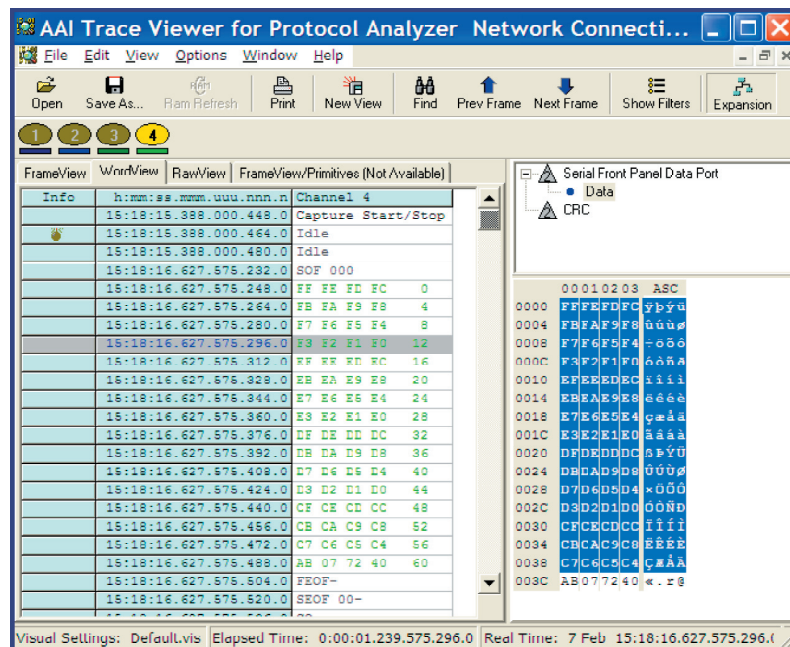
- iSCSI, IP, TCP, and UDP protocol suites provided as standard
- Supports sequential and direct access devices
- Automatic decodes for iSCSI, IP, TCP, and UDP and many other upper layer protocols
- Add new and proprietary protocols using Protocol Editor option

## Error Injector

- Inject sequential errors
- Integrated features
- Two port, full duplex software license with hardware blades
- Sits in-line between two nodes and can replace data on the link with user defined data in real time

- Users can automatically recalculate and insert CRC values where appropriate
- Corrupt values or remove events from the link to simulate error scenarios
- Works alone or in conjunction with Investigator™ protocol analyzers

Filter. View. Capture.



Easy-to-use  
drag & drop  
GUI

100% data  
capture at  
full line rate.

Multiple lane  
support with  
cross lane  
triggering.

Maintain. Measure. Test.



Link status  
and utilization

Frames  
transmitted

Bytes  
transmitted

Frames  
transmitted  
by size

## Bit Error Rate Tester

- Find next and previous frames
- Go to and create bookmarks
- Search for source or destination address
- Search for any data within a frame
- Library of predefined search items
- Find trigger events

## Network Connections

The Ethernet physical layer has multiple physical layer options. The Investigator™ platform supports Small Form Factor Pluggable modules (SFP's) to allow the user to easily switch between various optical and copper physical layers. Passive optical taps are also available where the circumstances dictate that the insertion of the test tool cannot disrupt the network traffic. (Protocol Analysis only.)

## API Library

The sFPDP API Library is a "C" API that provides the user with programmatic control over all the Investigator™ tools. Using the API Library, the user can write custom applications that function over the platform or create code for test automation.

## Platforms and Configurations

Absolute Analysis Investigator™ sFPDP Analyzers are available in several platforms ranging from highly portable notebooks to high port count rack mounts.

## Training

Absolute Analysis offers comprehensive training courses for products and protocols. Training can be provided at your location or remotely, and can be customized to your requirements.

## Service and Support

Absolute Analysis provides unsurpassed service to all Investigator™ users including remote diagnostics, extended warranties and upgrade paths current offerings from any Investigator™ system.

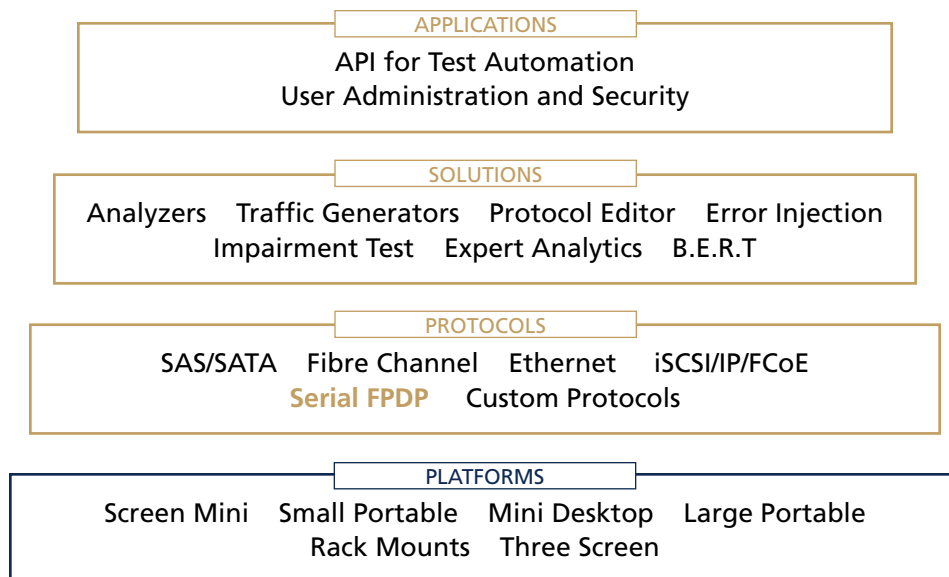
## Investigator Systems

	Size	Weight.	# of
<b>3 Screen Portable</b>	17" x 13.6" x 10.6"	45 lbs	4
			
<b>Notebook</b>	10" x 2.6" x 15.1"	5 lbs	2
			
<b>Mini Desktop</b>	12.6" x 3.7" x 13"	19 lbs	2
			
<b>Small Portable (ruggedized plastic)</b>	16.7" x 13.1" x 6.8"	23 lbs	2
			
<b>Large Portable (ruggedized)</b>	17" x 13.6" x 9.6"	38 lbs	4
			
<b>19" Rackmounts</b>	1U x 19" x 17.5"	25 lbs	1
			
<b>19" Rackmounts</b>	2U x 19" x 20"	35 lbs	2
			
<b>19" Rackmounts</b>	4U x 19" x 18"	45 lbs	8
			

# Absolute Analysis Investigator™ Protocol Testing Solutions

Absolute Analysis Investigator™ has been designed from the ground up to be a multi-speed, multi-protocol, multi-function test platform. Investigator™ is used in the development, qualification, manufacturing and support of equipment with external or embedded communications interfaces. These communications interfaces can be based on industry standards or Investigator™ can also be customized to support non-standard interfaces and protocols.

## Absolute Analysis Investigator™ Architecture



COLOR KEY:  
 –Investigator™ Software  
 –Investigator™ Hardware

### Get your free Serial Test Verification Kit.

Includes:

- *Best Practices for High-Speed Serial Test Guide*
- *How to Solve Complex Protocol Problems DVD*
- *Protocol Analysis Tips 'n Tricks Newsletter*



for more information:

**NextGig Systems, Inc. 805-277-2400 NextGigSystems.com**